

Digital Health Technologies In Systems Pharmacology

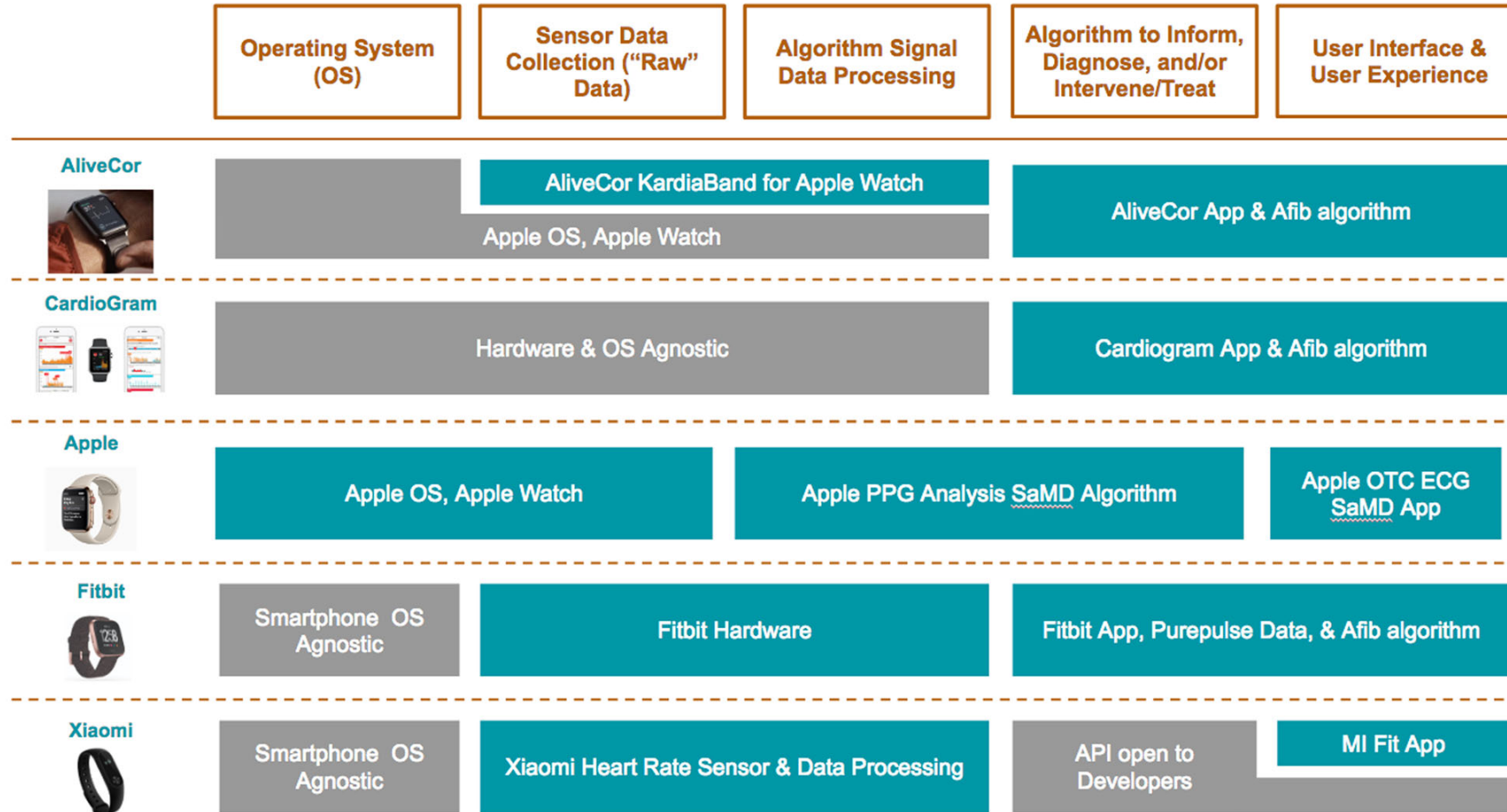
Lara Mangravite



SageBionetworks



Tech that measures established quantified clinical variables



What about cases where clinical assessments are not easy to quantify?

Unified Parkinson's Disease Rating Scale



III. Motor Examination

18. Speech

- 0 = Normal.
- 1 = Slight loss of expression, diction and/or volume.
- 2 = Monotone, slurred but understandable; moderately impaired.
- 3 = Marked impairment, difficult to understand.
- 4 = Unintelligible.

19. Facial Expression

- 0 = Normal.
- 1 = Minimal hypomimia, could be normal "Poker Face."
- 2 = Slight but definitely abnormal diminution of facial expression
- 3 = Moderate hypomimia; lips parted some of the time.
- 4 = Masked or fixed facies with severe or complete loss of facial expression; lips parted $\frac{1}{4}$ inch or more.

20. Tremor at Rest (head, upper and lower extremities)

- 0 = Absent.
- 1 = Slight and infrequently present.
- 2 = Mild in amplitude and persistent. Or moderate in amplitude, but only intermittently present.
- 3 = Moderate in amplitude and present most of the time.
- 4 = Marked in amplitude and present most of the time.

21. Action or Postural Tremor of Hands

- 0 = Absent.
- 1 = Slight; present with action.
- 2 = Moderate in amplitude, present with action.
- 3 = Moderate in amplitude with posture holding as well as action.
- 4 = Marked in amplitude; interferes with feeding.

22. Rigidity (Judged on passive movement of major joints with patient relaxed in sitting position. Cogwheeling to be ignored.)

- 0 = Absent.
- 1 = Slight or detectable only when activated by mirror or other movements.
- 2 = Mild to moderate.
- 3 = Marked, but full range of motion easily achieved.
- 4 = Severe, range of motion achieved with difficulty.

23. Finger Taps (Patient taps thumb with index finger in rapid succession.)

- 0 = Normal.
- 1 = Mild slowing and/or reduction in amplitude.
- 2 = Moderately impaired. Definite and early fatiguing. May have occasional arrests in movement.
- 3 = Severely impaired. Frequent hesitation in initiating movements or arrests in ongoing movement.
- 4 = Can barely perform the task.

24. Hand Movements (Patient opens and closes hands in rapid succession.)

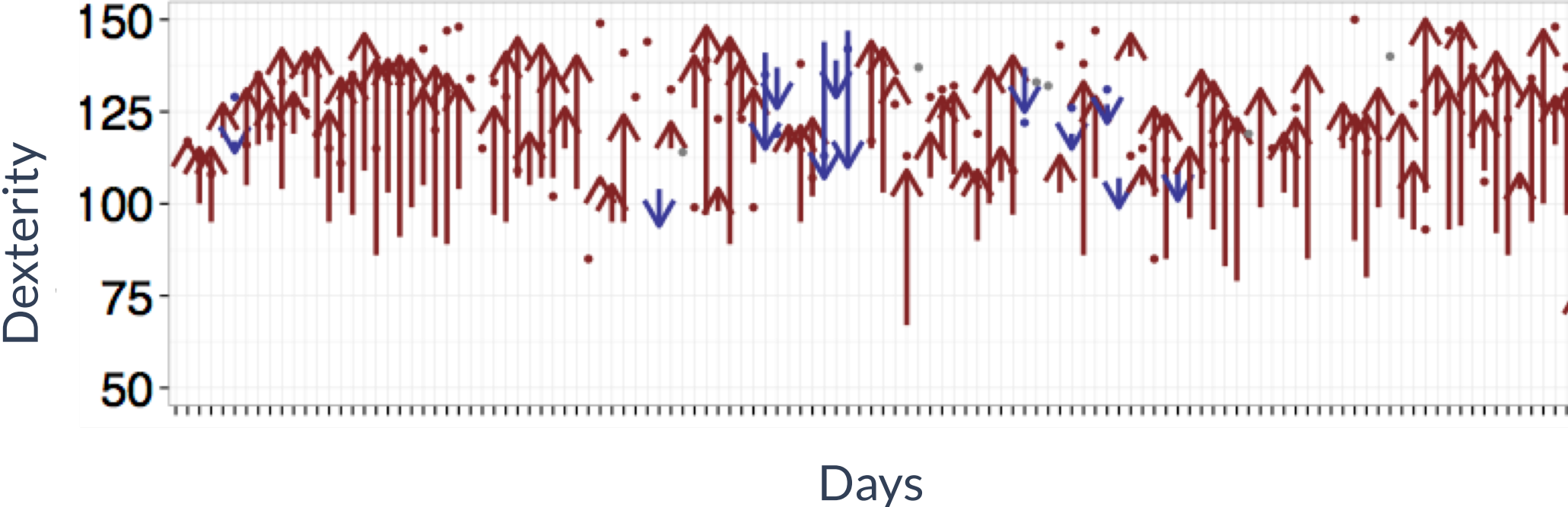
- 0 = Normal.
- 1 = Mild slowing and/or reduction in amplitude.
- 2 = Moderately impaired. Definite and early fatiguing. May have occasional arrests in movement.
- 3 = Severely impaired. Frequent hesitation in initiating movements or arrests in ongoing movement.
- 4 = Can barely perform the task.

25. Rapid Alternating Movements of Hands

(Pronation-supination movements of hands, vertically and horizontally, with as large an amplitude as possible, both hands simultaneously.)

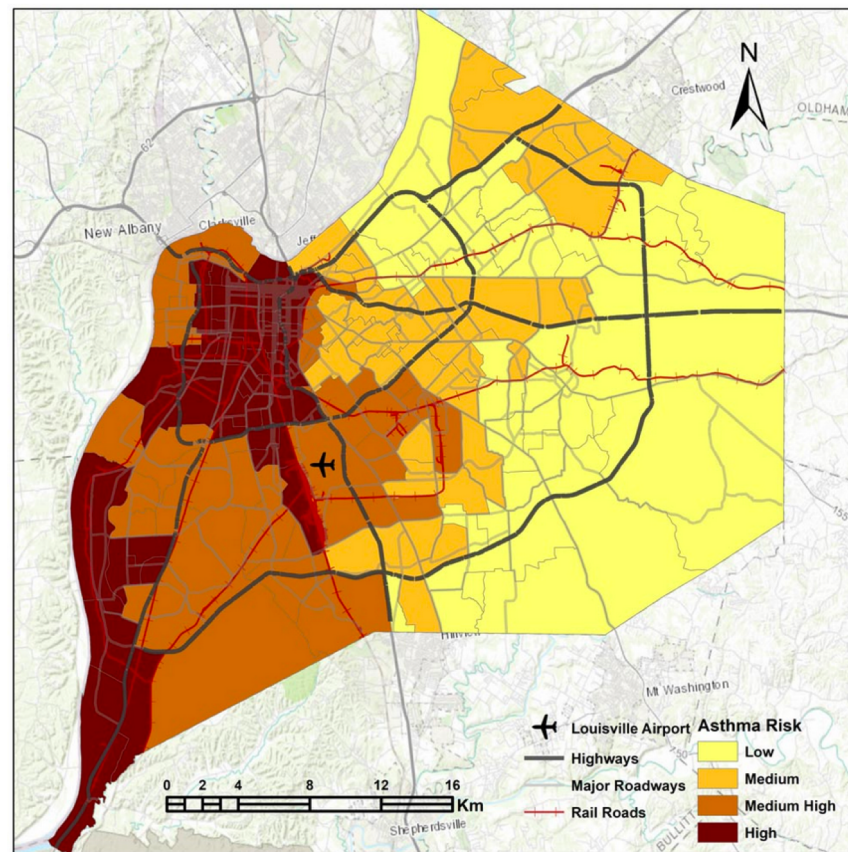
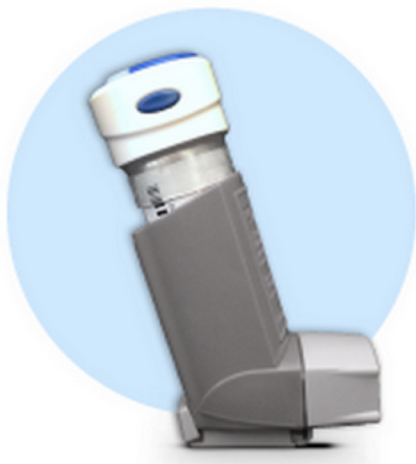
- 0 = Normal.
- 1 = Mild slowing and/or reduction in amplitude.
- 2 = Moderately impaired. Definite and early fatiguing. May have occasional arrests in movement.
- 3 = Severely impaired. Frequent hesitation in initiating movements or arrests in ongoing movement.
- 4 = Can barely perform the task.

Daily evaluation of L-DOPA effects on finger tapping





Individualized recommendations for patients – clinical monitoring by doctors – public health policy



<https://www.airlouisville.com/>



Clinical
Trials



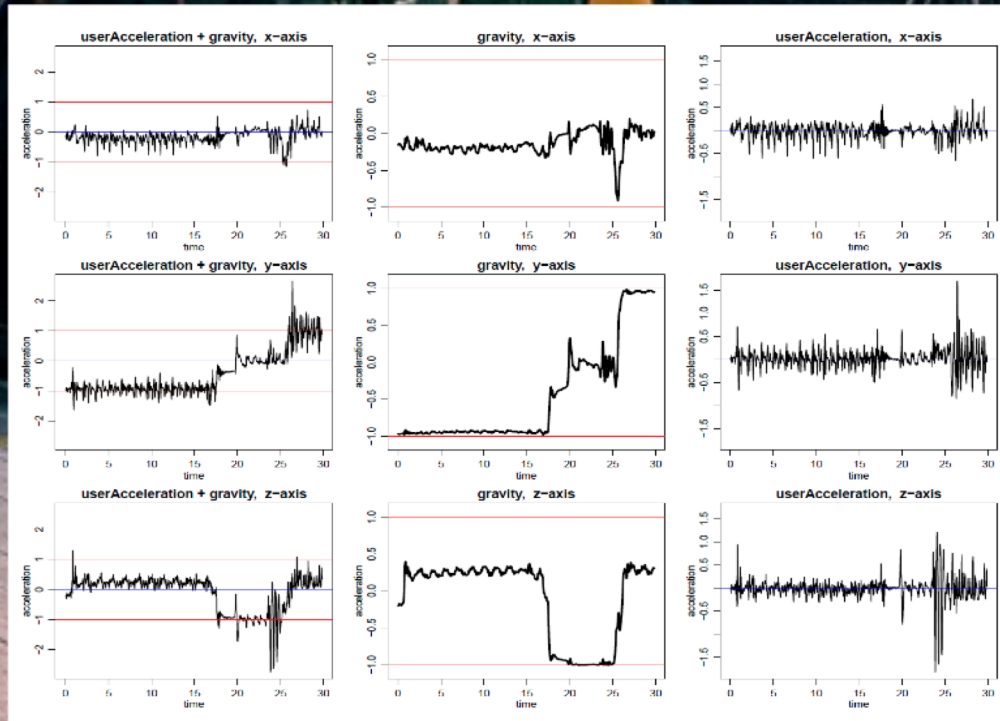
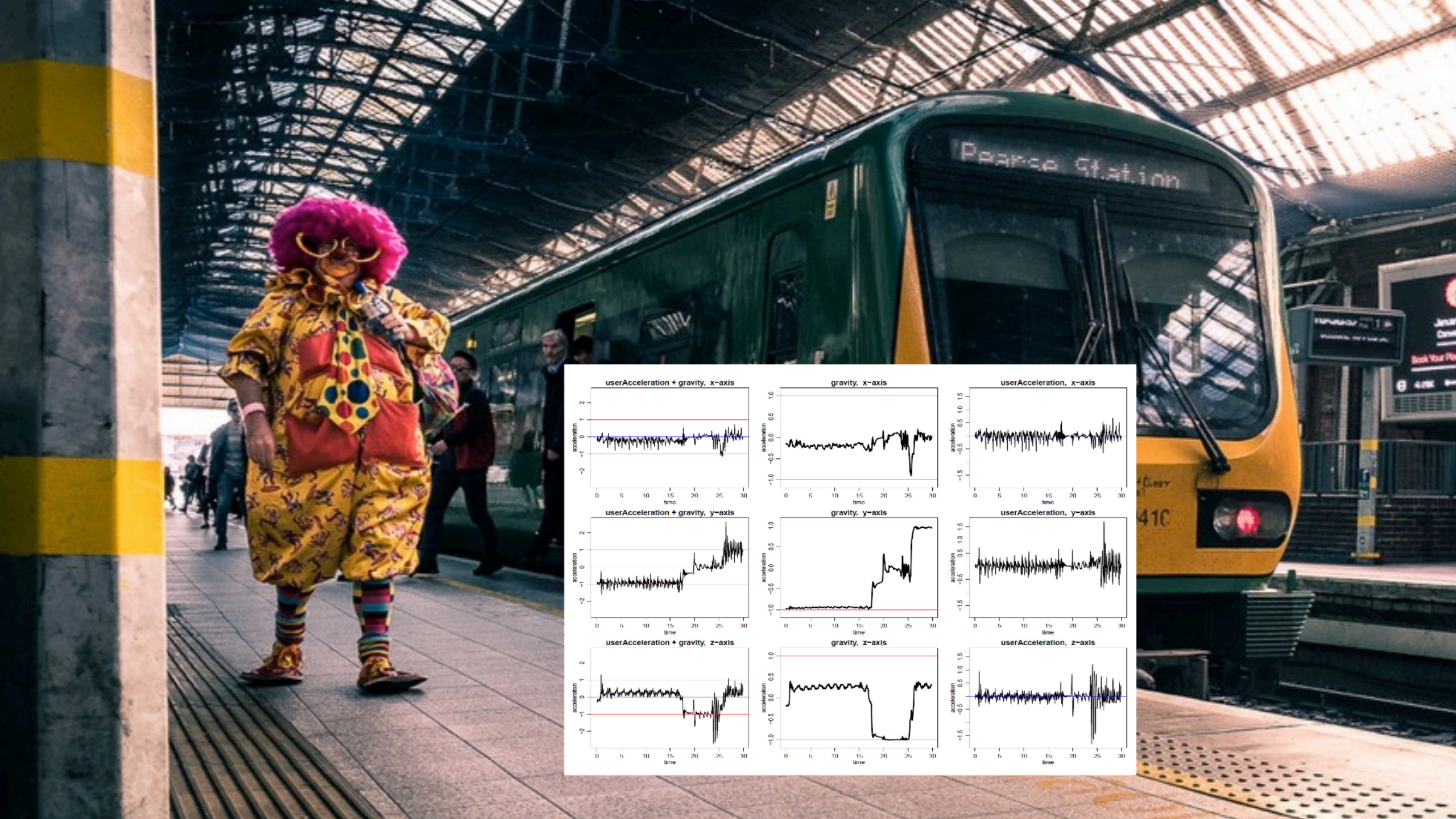
Precision
Medicine



Quality
of Life



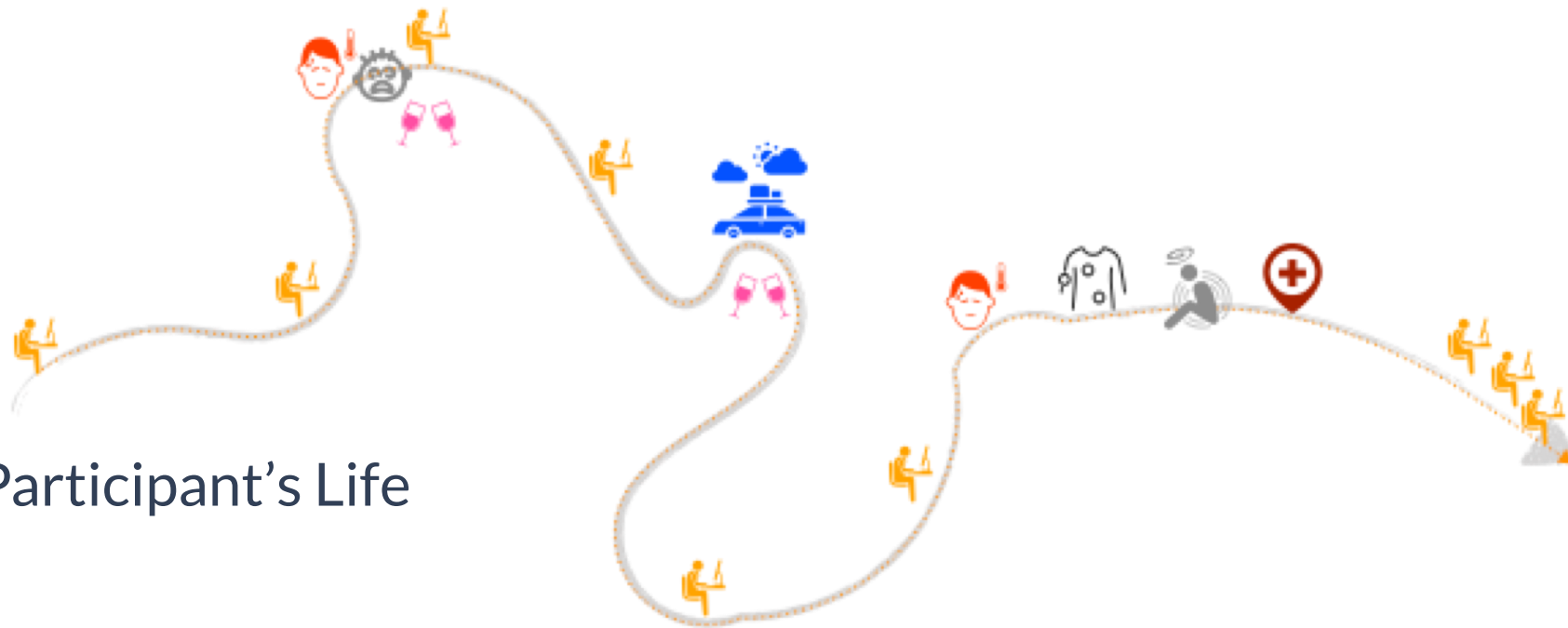
Real-World
Evidence



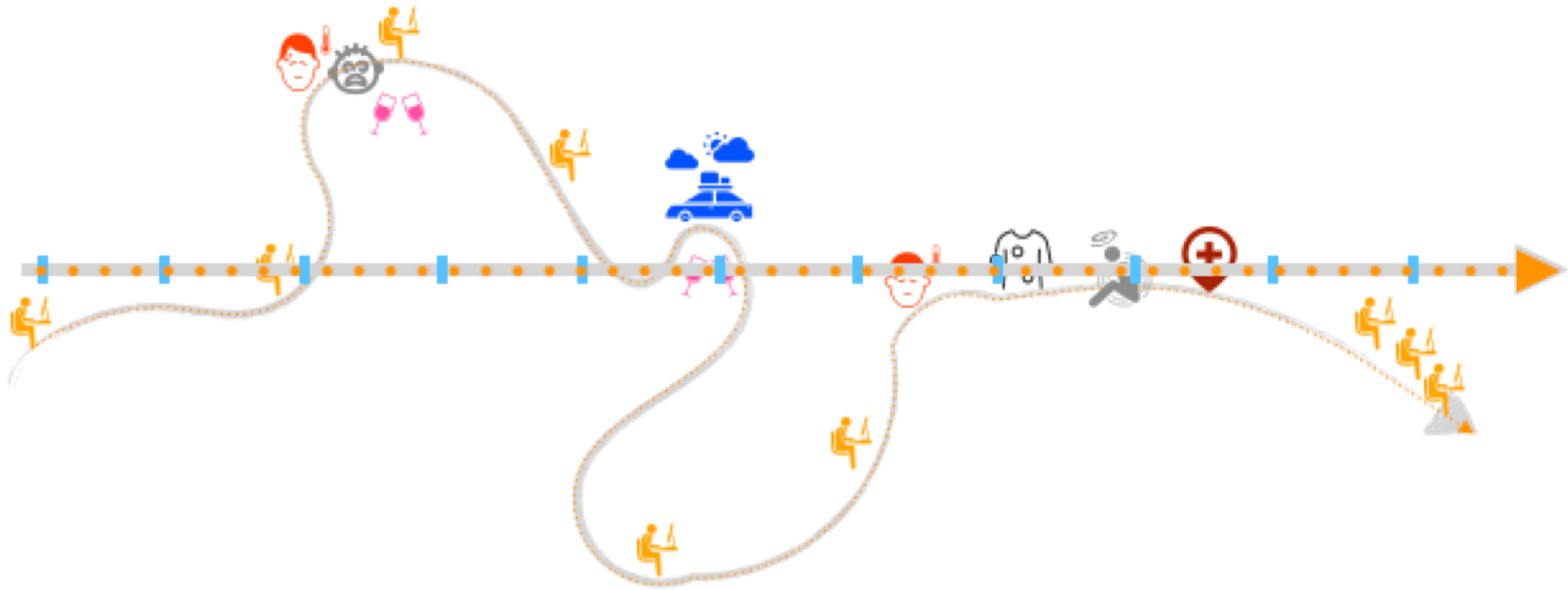
Research Protocol



Participant's Life



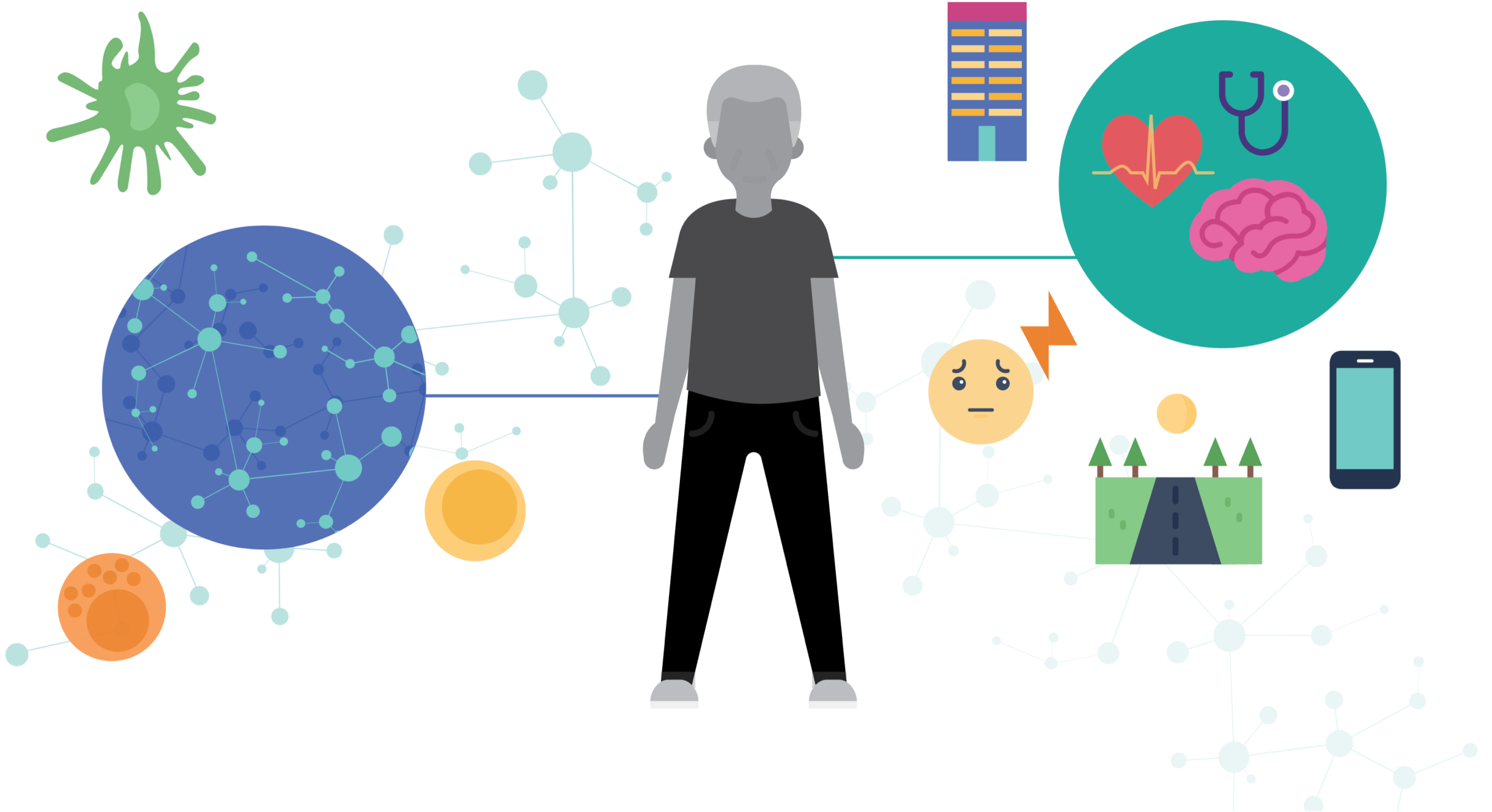
Research Protocol



Participant's Life

Truthiness is what you want the facts to be as opposed to what the facts are. What feels like the right answer as opposed to what reality will support.

Stephen Colbert



Show Don't Tell

Transparency. Reproducibility. Replication.



Parkinson's Disease Digital Biomarker DREAM Challenge

ENABLED BY





SageBionetworks

Better Science Together

